

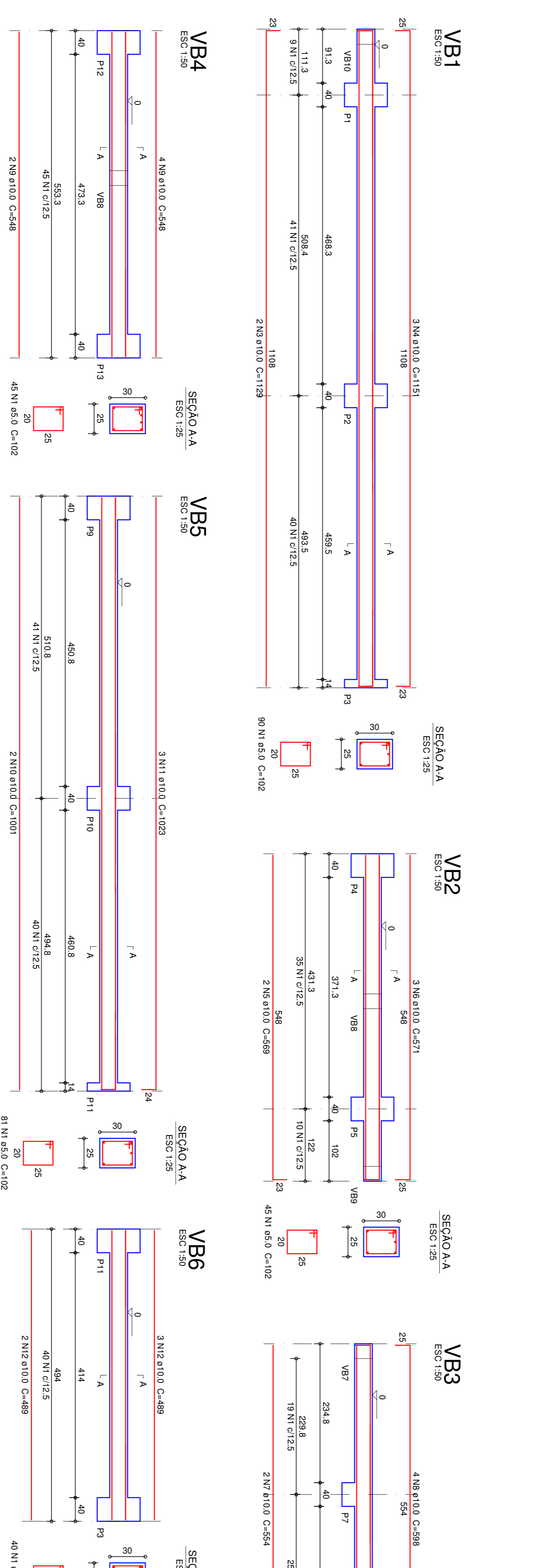
Relação do aço

ACO	N	DIAM (mm)	QUANT	CUNIT (cm)	C.TOTAL (cm)
CA60	1	5,0	51	96	4896
CA60	2	5,0	12	23	276
CA60	3	5,0	35	23	805
CA60	4	5,0	12	23	276
CA60	5	10,0	12	6	72
CA60	6	10,0	6	VAR	VAR
CA60	7	12,5	12	VAR	VAR
CA60	8	16,0	4	VAR	VAR
CA60	9	18,0	6	VAR	VAR

Resumo do aço

ACO	DIAM (mm)	C.TOTAL (cm)	PESO + 10% (kg)	PESO (kg)
CA60	10,0	13,5	9,1	8,3
CA60	16,0	16,0	14,0	12,7
CA60	5,0	81,7	90,0	81,7
CA60	PESO TOTAL		114,4	104,4

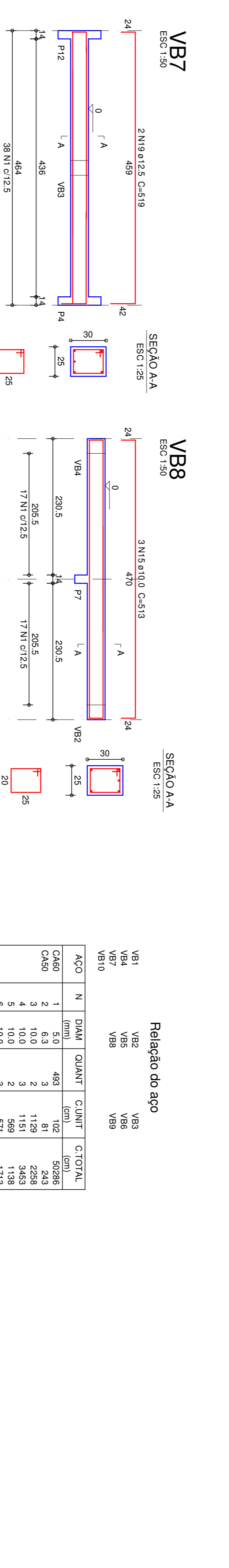
Volume de concreto (C-30) = 0,29 m³
 Área de forma = 5,56 m²



Relação do aço

ACO	N	DIAM (mm)	QUANT	CUNIT (cm)	C.TOTAL (cm)
CA60	1	5,0	493	102	50286
CA60	2	5,0	2	1129	2258
CA60	3	10,0	3	1151	3453
CA60	4	10,0	2	569	1138
CA60	5	10,0	3	571	1713
CA60	6	10,0	3	554	1108
CA60	7	10,0	4	598	2392
CA60	8	10,0	2	1001	2002
CA60	9	10,0	2	1023	2046
CA60	10	10,0	3	489	1956
CA60	11	10,0	5	489	2445
CA60	12	10,0	3	459	1836
CA60	13	10,0	3	470	1881
CA60	14	10,0	2	475	950
CA60	15	10,0	2	475	950
CA60	16	10,0	2	515	1030
CA60	17	10,0	3	550	1650
CA60	18	10,0	3	519	1038
CA60	19	12,5	2	598	1016

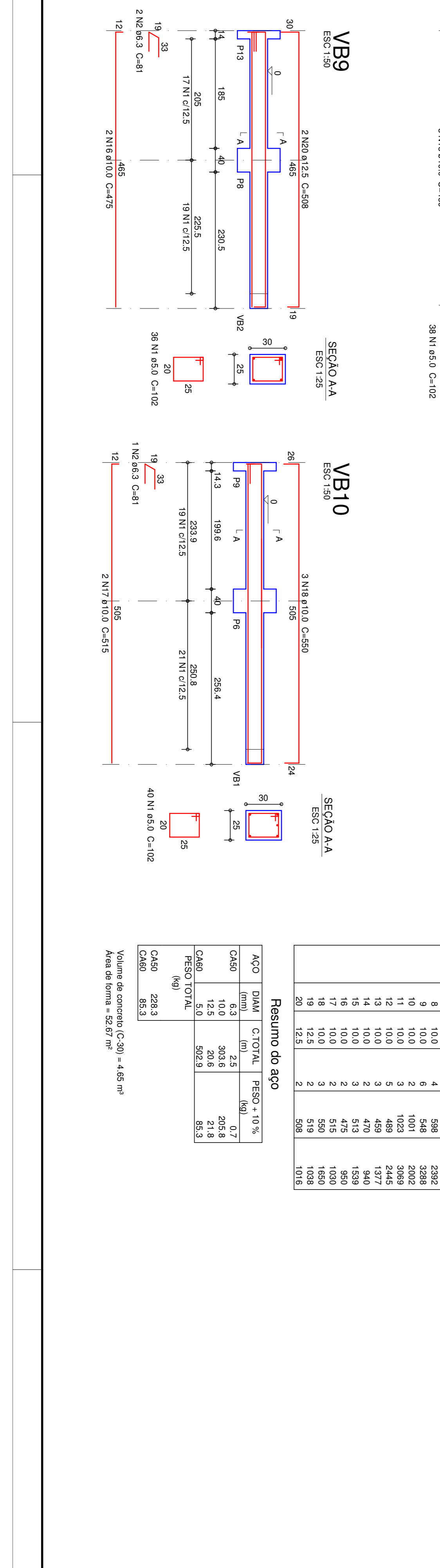
Volume de concreto (C-30) = 4,66 m³
 Área de forma = 52,67 m²



Relação do aço

ACO	N	DIAM (mm)	QUANT	CUNIT (cm)	C.TOTAL (cm)
CA60	1	5,0	493	102	50286
CA60	2	5,0	2	1129	2258
CA60	3	10,0	3	1151	3453
CA60	4	10,0	2	569	1138
CA60	5	10,0	3	571	1713
CA60	6	10,0	3	554	1108
CA60	7	10,0	4	598	2392
CA60	8	10,0	2	1001	2002
CA60	9	10,0	2	1023	2046
CA60	10	10,0	3	489	1956
CA60	11	10,0	5	489	2445
CA60	12	10,0	3	459	1836
CA60	13	10,0	3	470	1881
CA60	14	10,0	2	475	950
CA60	15	10,0	2	475	950
CA60	16	10,0	2	515	1030
CA60	17	10,0	3	550	1650
CA60	18	10,0	3	519	1038
CA60	19	12,5	2	598	1016

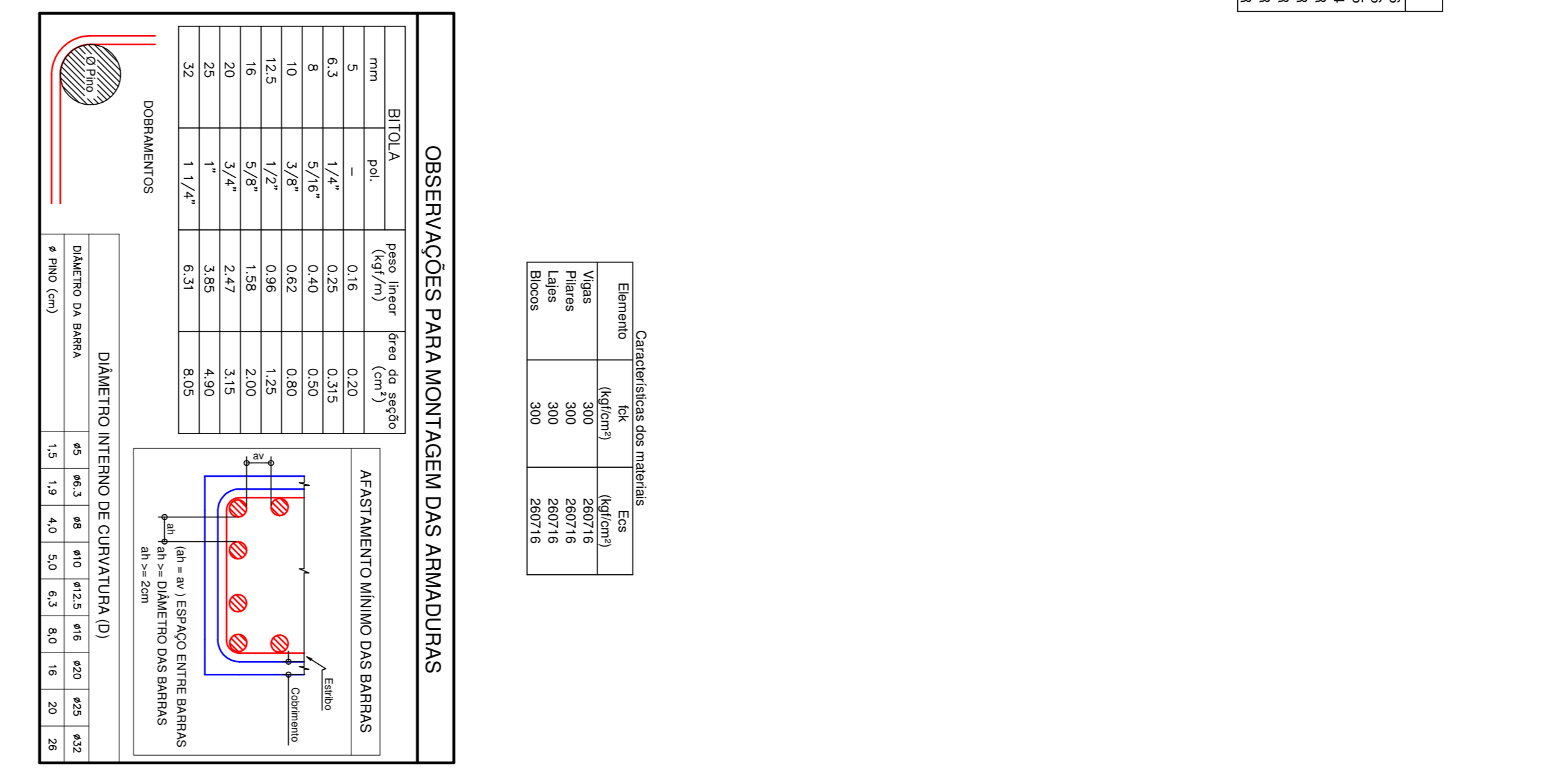
Volume de concreto (C-30) = 4,66 m³
 Área de forma = 52,67 m²



Resumo do aço

ACO	DIAM (mm)	C.TOTAL (cm)	PESO + 10% (kg)	PESO (kg)
CA60	6,3	2,5	0,7	0,6
CA60	10,0	30,6	295,8	266,4
CA60	12,0	20,6	21,4	19,3
CA60	5,0	502,9	55,3	50,3
CA60	PESO TOTAL		312,2	286,3

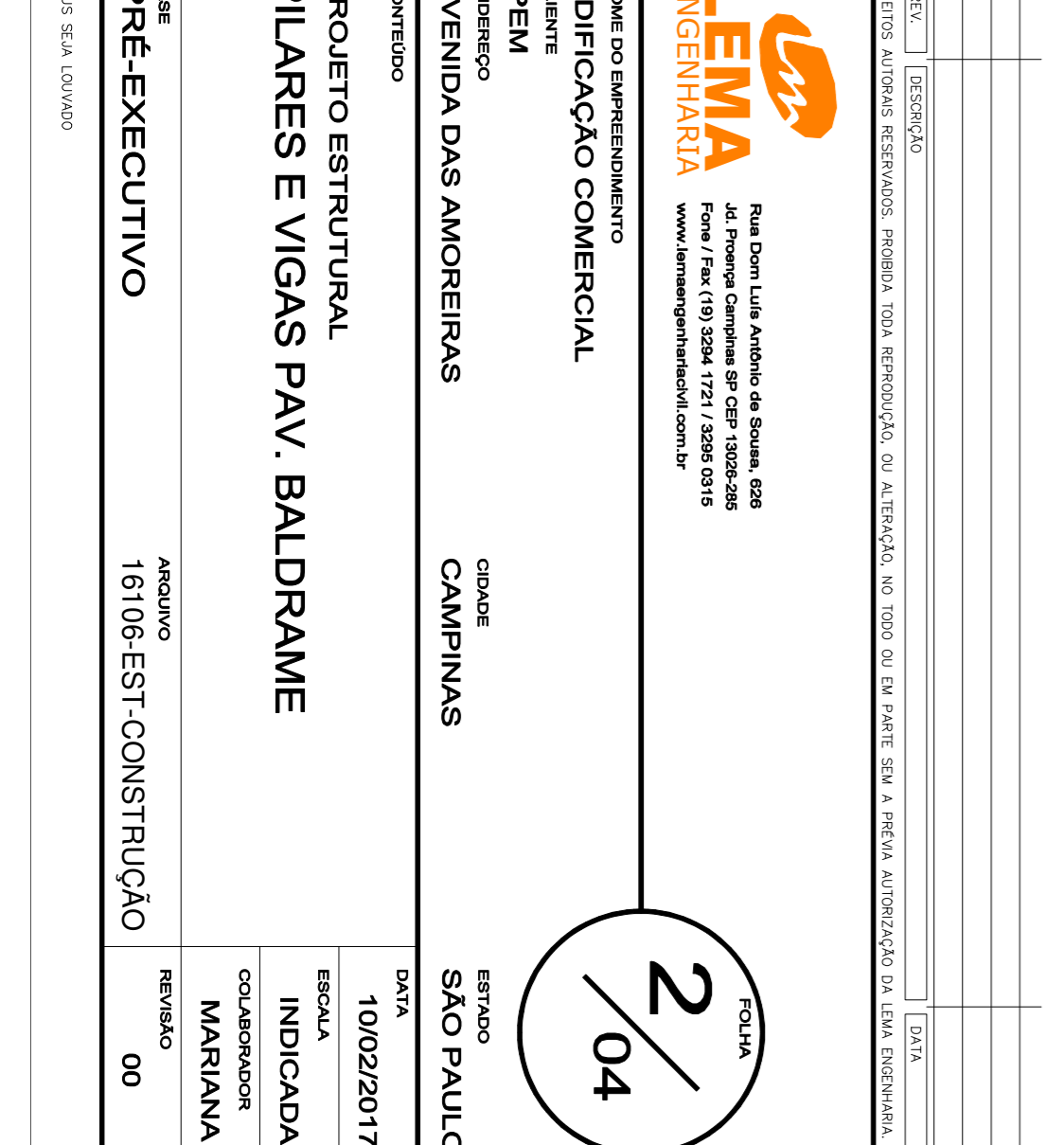
Volume de concreto (C-30) = 4,66 m³
 Área de forma = 52,67 m²



Relação do aço

ACO	N	DIAM (mm)	QUANT	CUNIT (cm)	C.TOTAL (cm)
CA60	1	5,0	493	102	50286
CA60	2	5,0	2	1129	2258
CA60	3	10,0	3	1151	3453
CA60	4	10,0	2	569	1138
CA60	5	10,0	3	571	1713
CA60	6	10,0	3	554	1108
CA60	7	10,0	4	598	2392
CA60	8	10,0	2	1001	2002
CA60	9	10,0	2	1023	2046
CA60	10	10,0	3	489	1956
CA60	11	10,0	5	489	2445
CA60	12	10,0	3	459	1836
CA60	13	10,0	3	470	1881
CA60	14	10,0	2	475	950
CA60	15	10,0	2	475	950
CA60	16	10,0	2	515	1030
CA60	17	10,0	3	550	1650
CA60	18	10,0	3	519	1038
CA60	19	12,5	2	598	1016

Volume de concreto (C-30) = 4,66 m³
 Área de forma = 52,67 m²



Volume de concreto (C-30) = 4,66 m³
 Área de forma = 52,67 m²